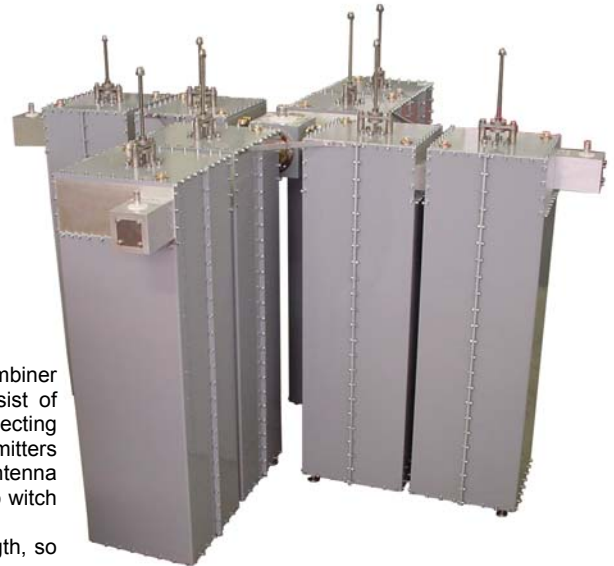


MODEL FQCSDC5

- **COMBINER 4 CHANNELS**
- **TYPE STAR POINT**
- **FM BAND 87.5÷108 MHz**
- **BAND II**
- **OPTION**



Model	Input Connector	Output Connector	Power Input	Power Output
FQCSDC5-1	7/8"	1+5/8"	5KW	10KW
FQCSDC5-2	1+5/8"	3+1/8"	5KW	10KW

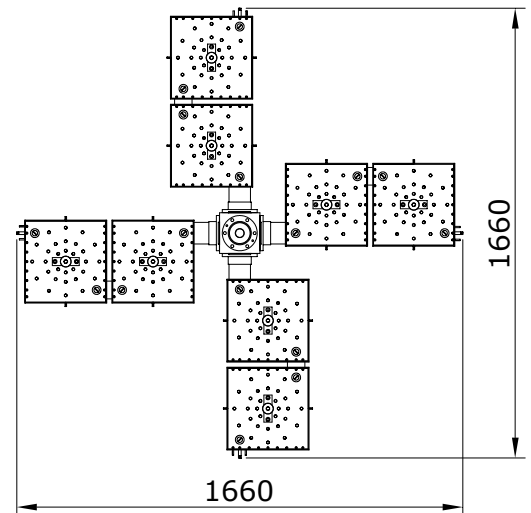
The star combiner basically consist of parallel connecting several transmitters to a single antenna

system through suitable band pass filters, each on tuned transmitter frequency to witch it's connected.

The parallel connection is obtained by means of coaxial lines of determined length, so as provide for adequate isolation between transmitters.

TYPICAL SPECIFICATIONS

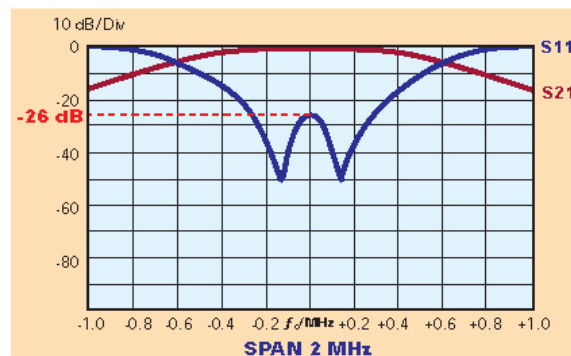
Model	FQCSDC5 – Type STAR POINT
Impedance	50 Ohm
Frequency Range	87.5-108 MHz
VSWR ±150 KHz	1.1:1 max
Insertion Loss	at f_0 0.15 dB max
Return Loss ±150Khz	≤ -26 dB
Isolation ±2 MHz	≥ 30 dB
No. of Input	4
No. of Output	1
Connectors	Input 1+5/8" Output 3+1/8"
Max Power	6KW × 4 Channels
Working Temperature	-20°C ÷ +50°C
Colour	Enamel gray ral 7001
Materials	Aluminium, Brass, Copper, PTFE, Stainless Steel, Silvering (min. 12µm thickness)



Features:

- Distortion – Free Transmission
- Low loss, high isolation
- Natural convection

Dimensions	1400(Max size)×1660×1660 mm (55.1(Max size)×65.3×65.3 inch) (H×L×W)
Net Weight	≅ 180 Kg



Typical shape of a curves for S11 and S12 parameters for single filter