

MODEL FQCSTC05

- **COMBINER 4 CHANNELS**
- **STAR POINT**
- **FM BAND 87.5÷108 MHz**
- **BAND II**
- **RACK VERSION**
- **OPTION**

Model	Input Connector	Output Connector	Power Input	Power Output
FQCSTC05-1	7/16"	7/16"	500W	2KW
FQCSTC05-2	7/16"	7/8"	500W	2KW

The star point combiner basically consist of parallel connecting several transmitters to a

single antenna system through suitable band pass filters, each on tuned transmitter frequency to witch it's connected.

The parallel connection is obtained by means of coaxial lines of determined length, so as provide for adequate isolation between transmitters.

TYPICAL SPECIFICATIONS

Model	FQCSTC05 – Type STAR POINT	
Impedance	50 Ohm	
Frequency Range	87.5-108 MHz	
VSWR ±150KHz	1.1:1 max	
Insertion Loss	at fo 0.65 dB max	
Return Loss ±150KHz	≤ -26 dB	
Isolation ±2MHz	≥ 30 dB	
No. Input	4	
No. Output	1	
Standard Connectors	Input N	Output 7/16" (See table)
Max Power	500 W X 4 Channels	
Working Temperature	-20° ÷ +50°	
Colour	Enamel Gray Ral 7001	
Materials	Aluminium, Brass, Copper, PTFE, Stainless Steel, Silvering (min 12µm thickness).	

Features:

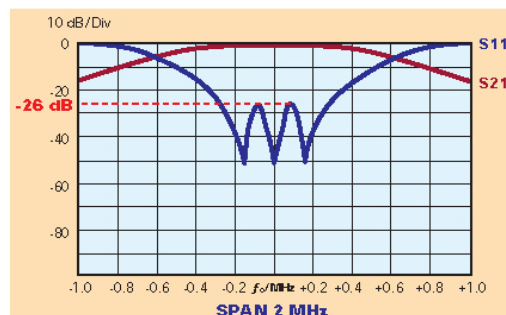
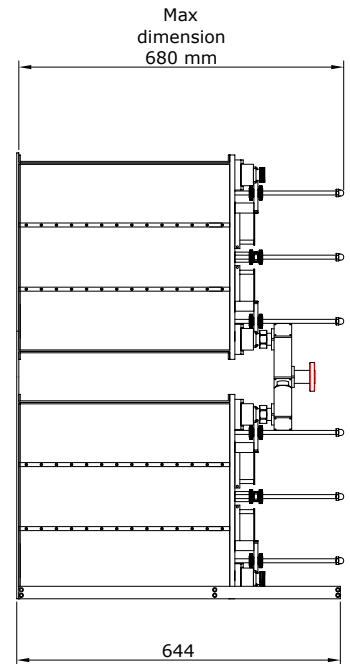
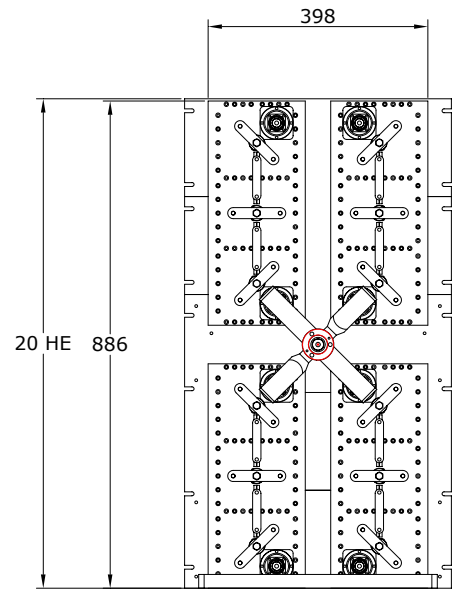
- Star-point system with triple pass-band cavity filters
- Star-point system with pass stop
- Low loss, high isolation
- Natural convection
- Modular design

Rack size

Panel Size	20 HE (1 HE=44,45 mm)
------------	-----------------------

Combiner size

Dimensions	886×398×680 mm (34.9×15.7×26.8 inch) (H×L×W)
Net Weight	≅ 106 Kg (including hardware mounting Rack)



Typical shape of a curves for S11 and S12 parameters for single filter

"These specifications are subject to change without notice"

